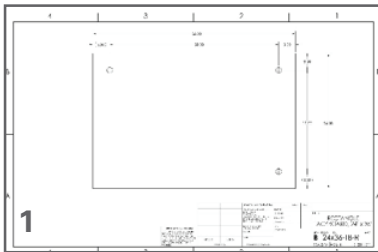




# TACKBOARD INSTALLATION



**1)** Refer to the drawing included with your tackboard to determine how far apart your hole locations should be.

**2)** Pre drill the hole locations to determine if there is a wall stud at either location.

**3)** Make sure the holes are level.



If there is a stud, there is no need to use the anchors and you can skip to step 6

**4)** Screw in the white anchors at both hole locations.



**5)** Screw the metal anchors screws into the anchors (or wall directly if there is a stud), leaving approximately 1/8" showing.

**6)** Hang the tackboard on the screws and pull down slightly to level the board. The wall screw heads should sink into the backing of the tackboard to provide a secure mount.



**7)** The tackboard can be adjusted if your screws are not perfectly aligned.